

# GREEN ELECTRONICS SCOPE





# **INTRODUCTION**

Our company works in the field of electronics technology, we have four main departments:

- \* AUTOMATION.
- \* MAINTENANCE.
- \* ELECTRONICS R&D.
- \* SALES.

# **PROFILE :**

- \* Research and Development for electronic control systems.
- \* Authorized service center for Telemecanique speed drives.
- \* Industrial systems automation using Telemecanique PLCs and speed drives.
- \* Industrial systems maintenance and upgrade.
- \* Microprocessor/Microcontroller based control systems design.

# AUTOMATION

Green Electronics is an authorized system integrator for SCHNIDER electric company, an international company that manufacture : PLCS, speed drives, electromechanical sensors and Human Machine Interface (HMI),GREEN ELECTRONICS have all SCHNEIDER ELECTRIC automation support.

Thus we can construct and upgrade industrial systems and machines using PLCS, speed drives and SCADA systems.

Also, we can deliver the following SCHNEIDER automation products :

- TELEMECANIQUE ALTIVAR SPEED DRIVES.
- ELECTROMECHANICAL DETECTORS.
- MODICON / TELEMECANIQUE PLCS.
- ROTARY INCREMENTAL AND ABSOLUTE ENCODERS.
- PRESSURE SENSORS.

# AUTOMATION PICTURES



# ***AUTOMATION PICTURES***



# PRODUCTS

- Linear / switching power supply units.
  - DC / DC converters.
- Intelligent light dimming units.
  - Solid state relay modules.
  - Stepper motor controllers.
    - DC motor controllers.
    - PLC training units.
  - moving sign displays.
  - Prayers time displays.
    - sensor converters.
  - Small CNC control boards
  - Access control systems.
  - Lead acid battery chargers.
- Thyristor phase control modules.
- Digital POT. For speed control.
  - Custom made new designs

الساعة  
04:49 م

العصر  
04:37 م

الفجر  
04:22 م

الظهر  
01:01 م

العشاء  
09:27 م

المغرب  
07:57 م

# PRODUCTS PICTURES



Linear power supply unit



Prayer times display



DC to DC isolation port



Supply port



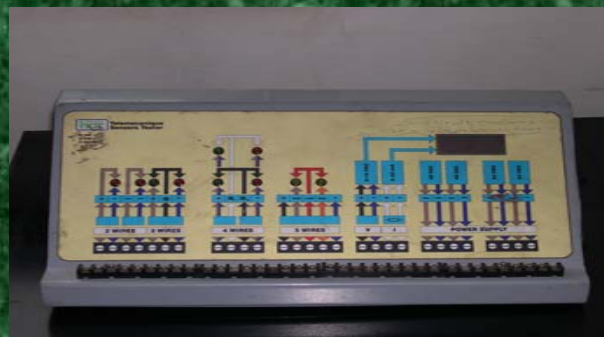
Addressable light infra red remote controller



DC motor driver



24 channels dimmer console



Industrial sensors tester



Switching mode power supply

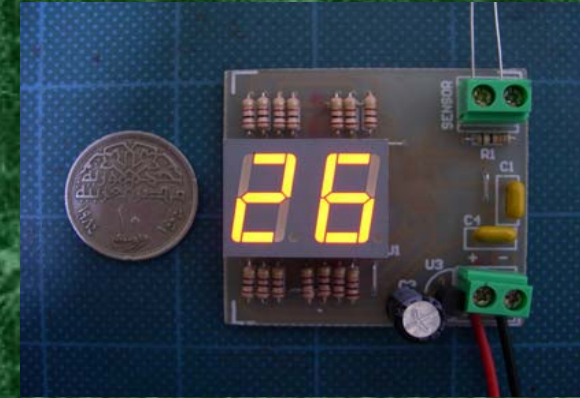
# PRODUCTS PICTURES



Sequencer module



Mini Prayer times display



Temperature Control system



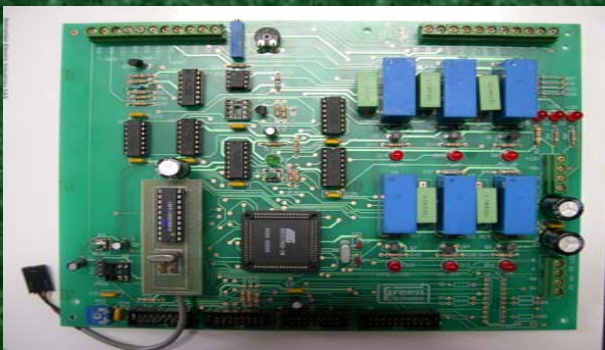
PLC training system 1



PLC training system 2



PLC training system 3



Diesel Testbench Controller

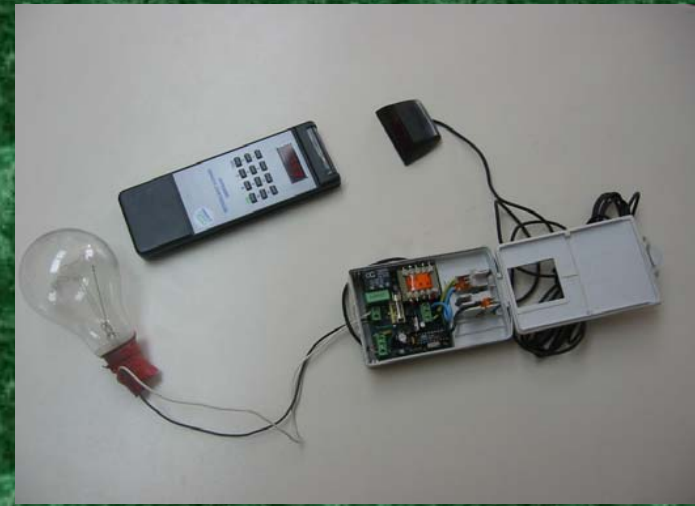
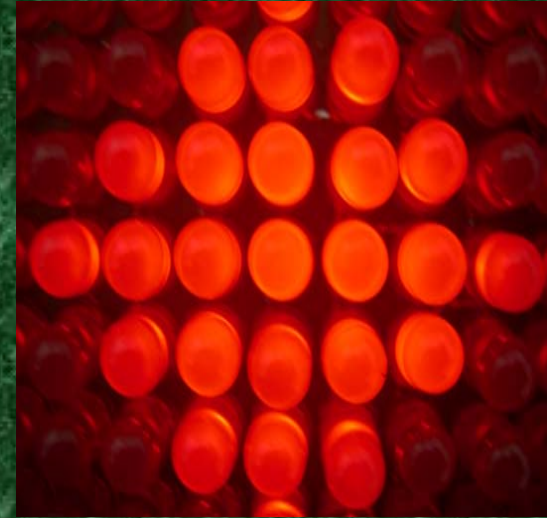
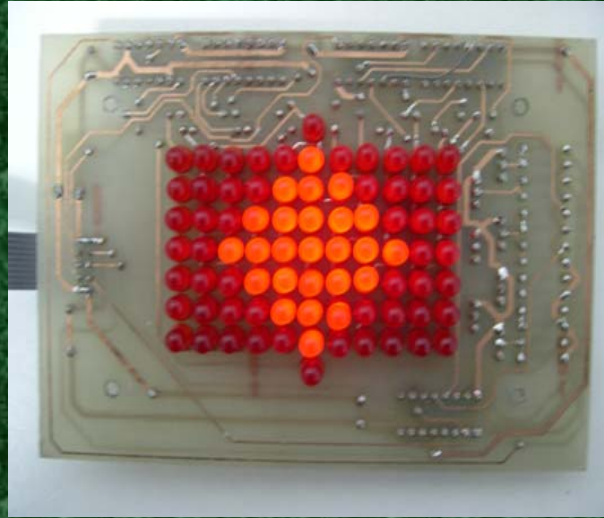
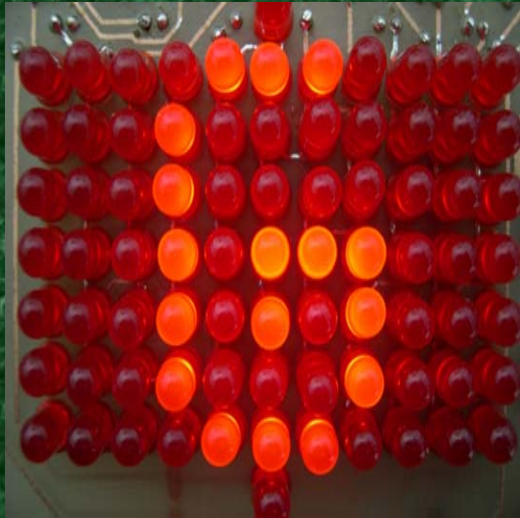


24 Channels programmable dimmer



Capacitive tripping supply unit

# PRODUCTS PICTURES

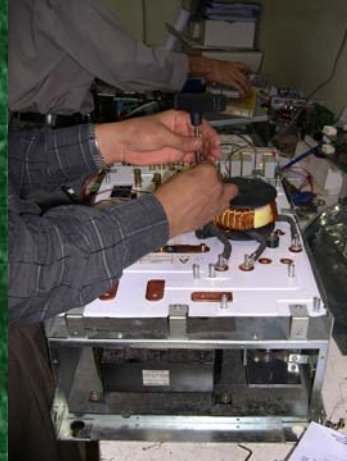


# MAINTENANCE

We are experts in troubleshooting, repair, after sale support and maintenance of :

- Telemecanique speed drives:
- Industrial control units:
  - A. fault repairing.
  - B. original design defects modification.
  - C. card duplication.
  - D. missing modules recovery.
- Conduct global maintenance contracts for electric/electronic/industrial equipments and systems.

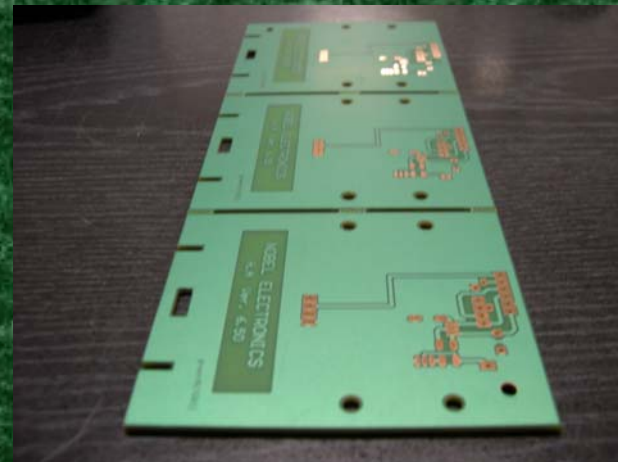
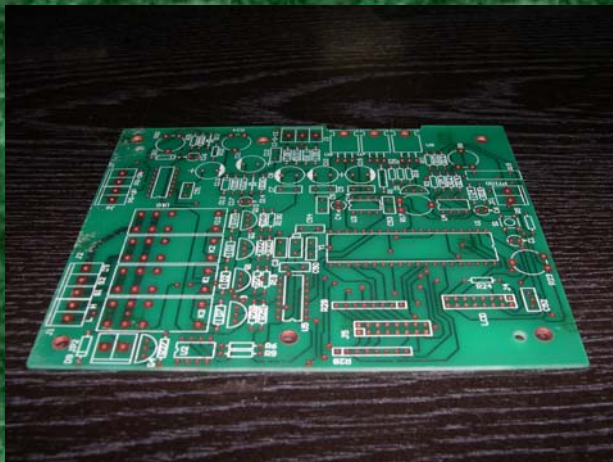
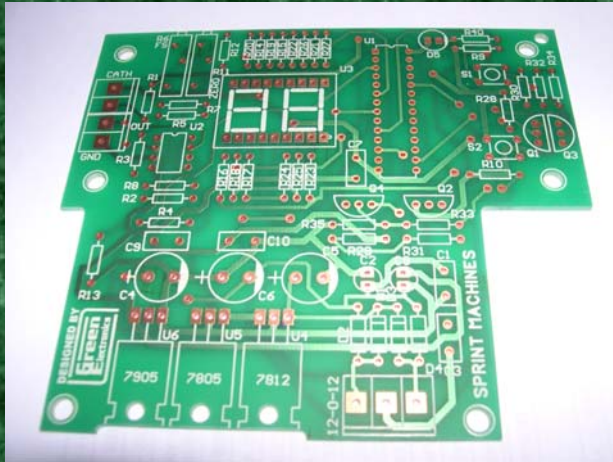
# MAINTENANCE PICTURES



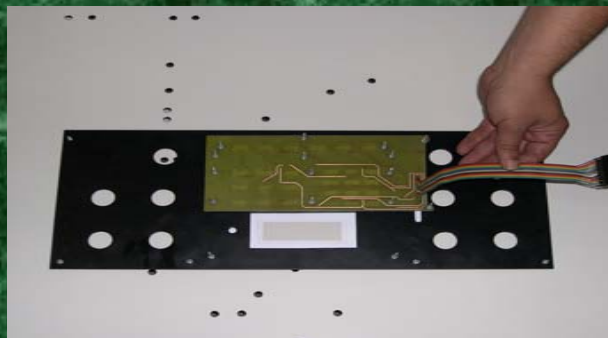
# EXHIBITIONS



# PCB DESIGN & MANUFACTURE



# FACEPLATES



Please refer to the detailed pdf file for Faceplates development on this CD

**ASK FOR YOUR OFFER ... NOW**



**HOW TO CONTACT US**

- By email : [sales@greenelectronics.com.eg](mailto:sales@greenelectronics.com.eg)
- By phone : +202 7949209
- By fax : +202 7949209

**LETS DO IT THE RIGHT WAY**